



ON SITE

- Central confort station with showers and toilets
- Hiking trails (3, 5, and 8.5 km)
- Sauna with outdoor shower
- Paddleboard, canoe, kayak / snowshoe, ski hok
- Board games and outdoor games
- Campfire
- Insect hotels
- Onsite gift shop
- Vacuum-packed meals sold onsite
- À-la-carte activities (advance booking required)

ACCOMMODATIONS AND ROOMS

- Atihk^w cabins - 4 persons/cabin
- Mwak^w floating/on-ice cabins - 4 persons/cabin
- Community hall - capacity of 50 people
- Floating / on-ice studio - capacity of 12 persons

ITEM TO BRING

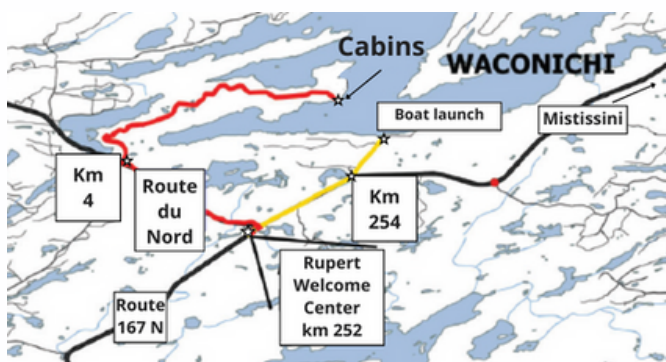
- **Bedding (sheets, blanket, or sleeping bag)**
- Food for the duration of the stay and potable water
- Warm and comfortable clothing
- Raincoat and outdoor coat
- Clothes for sauna use
- Indoor shoes or slippers
- Hiking shoes or boots
- Flashlight and/or headlamp
- Dish cloth
- Towel, soap
- Biodegradable soap and shampoo
- Sunscreen, insect repellent, lip balm

ARRIVAL STARTING AT 5:00 PM ON SITE

Important : As the fishing season has ended, fishing is not permitted on site.

LOCALISATION

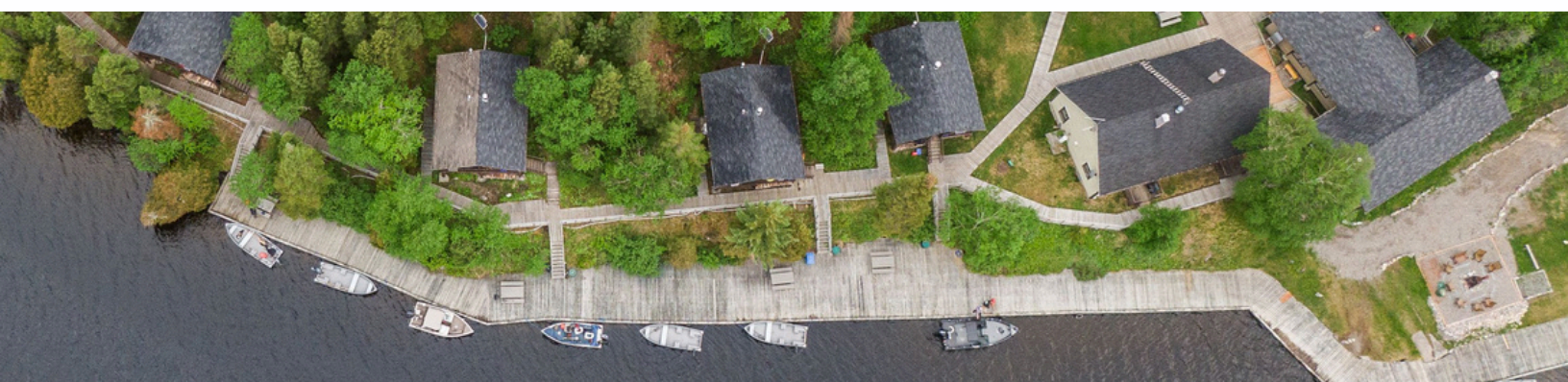
At kilometer 252 on 167 N Road, take the North Road. At kilometer 4, turn right and continue for 8 km to Waconichi Lake site. Please note, unpaved road for 12 km



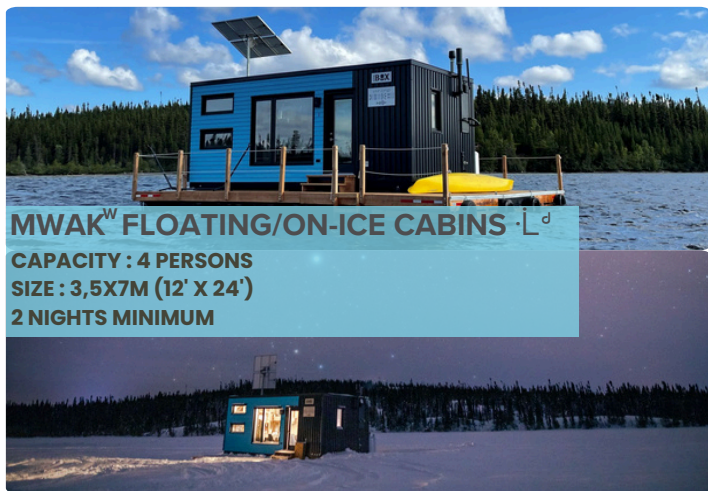
QUESTIONS?

RUPERT WELCOMING OFFICE

1584, 167 N Road, CP 38,
Chibougamau (Qc) G8P 2K5
Phone : (418) 748-7748
info@nibiischii.com
www.nibiischii.com



INFORMATION SHEET - WACONICHI LAKE - FLOATING / ON-ICE COMPLEX



MWAK^W FLOATING/ON-ICE CABINS ·L^d
CAPACITY : 4 PERSONS
SIZE : 3,5X7M (12' X 24')
2 NIGHTS MINIMUM

PRICING

Rental of both floating cabins with the floating studio
Price upon request

INCLUDES

- 2 wooden bunk beds
- Futon (can accommodate a child)
- Fitted sheets and pillows with pillowcases
- Full bathroom (propane toilet, sink, and shower)
- Table with 4 chairs
- Solar-powered refrigerator and freezer
- Fully equipped kitchen with coffee maker, kettle, toaster, dishes (8 sets), 2 propane burners, pots, pans, utensils
- Electricity (15A / 120V) and non-potable running water
- Propane heating
- Outside the cabins: BBQ, bistro table, chairs,
- Anchoring on the platform for boats
- Canoe, paddleboard, and kayak available

MWAK^W FLOATING STUDIO ·L^d

CAPACITY : 12 PERSONS
SIZE : 3.5X9M (12' X 30')



INCLUDES

- High-speed internet network
- Television
- Non-potable running water and electricity
- Propane heating
- Tables and chairs for 12 people
- Utility carts
- Two sofas
- Small counter, coffee maker, kettle
- Toilet cabinet and sink
- Yoga equipment (mats, cushions, and straps)



σΛΥΓ ΔΟΥΔΑ
NIBIISCHII

