

WACONICHI LAKE INFORMATION SHEET - COMMUNITY HALL



COMMUNITY HALL

CAPACITY: 50 PEOPLE
SIZE: 98M² (1055 SQUARE FEET)

PRICING

\$500 for the day: 8 a.m. to 5 p.m.

\$500 for the evening: 5 p.m. to 11 p.m.

Special package: \$750 for the day and evening

SERVICES OFFERED

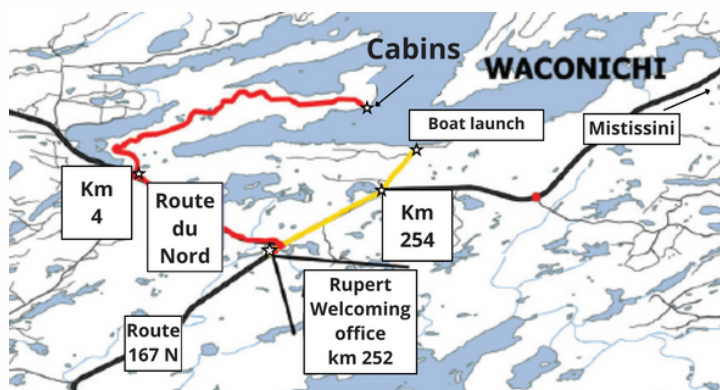
- High speed internet network
- Projector, screen, Bluetooth speaker
- Solarium with lake view
- Potable running water and electricity (15A / 120V)
- Wood stove (wood included) and electric heating
- Refrigerators and freezers
- Board games
- Furnishing:
 - Tables and chairs for 50 people
 - Service islands
 - Sectional sofas
 - Rocking chairs in solarium
- Bathroom and sink
- Full kitchen, equipped for catering
 - Coffee maker 45 cups, kettle
 - Cutlery, cups, glasses, bowls, utensils
 - Microwave, toaster, electric blender
 - Propane oven and cooktop
 - Dishwasher
 - \$ Boreal Cocktail/Mocktail on request
 - \$ Catering service on request
 - \$ Vacuum-sealed meals available on site

ON-SITE SERVICES

- Central sanitary block with showers and toilets
- Hiking trails (3, 5 and 8.5 km)
- Sauna with outdoor shower
- Paddle board, canoe, kayak/snowshoe, hok ski
- Board games and outdoor games
- Campfire
- Insect hotels
- Onsite gift shop
- A la carte activities (advance reservation required)

LOCALISATION

At km 252 of route 167 N, take the Route du Nord. At km 4, turn right and continue for 8 km to the Waconichi Lake site. Be careful, unpaved path for 12 km.



QUESTIONS?
RUPERT WELCOMING OFFICE
 1584, Route 167 Nord, CP 38,
 Chibougamau (Qc) G8P 2K5
 Phone: (418) 748-7748
info@nibiischii.com
www.nibiischii.com